

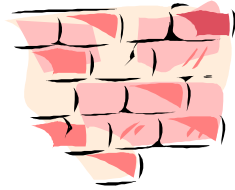
Lecture : établir le lien entre le phonème [m] et sons graphèmes (la lettre m). Entendre le son et le voir écrit.

 phonemus.fr

[m] → m / mm



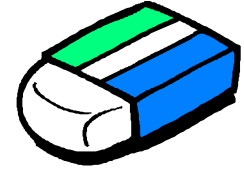
t o m a t e



m u r



c a m é r a



g o m m e



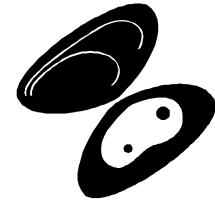
m u s i q u e



m o n t a g n e



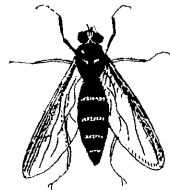
b o n h o m m e



m o u l e



p o m m e



m o u c h e



m a s q u e



m a m a n