

Lecture : repérer la place d'un son dans un mot par décomposition en syllabes phonétiques.

 phonemus.fr

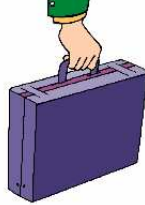
Taper dans les mains autant de fois qu'il y a de traits pour repérer le son.

[t]



— —

[l]



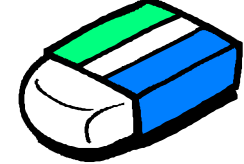
— —

[a]



— —

[m]



— —

[i]



— —

[a]



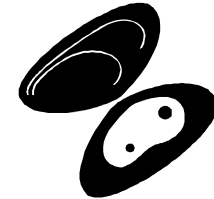
— —

[m]



— —

[l]



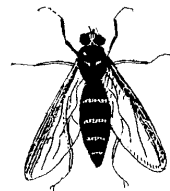
— —

[i]



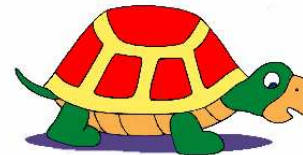
— —

[u]



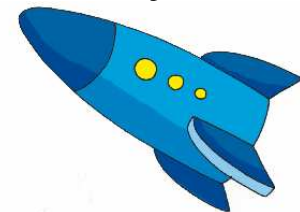
— —

[y]



— —

[y]



— —